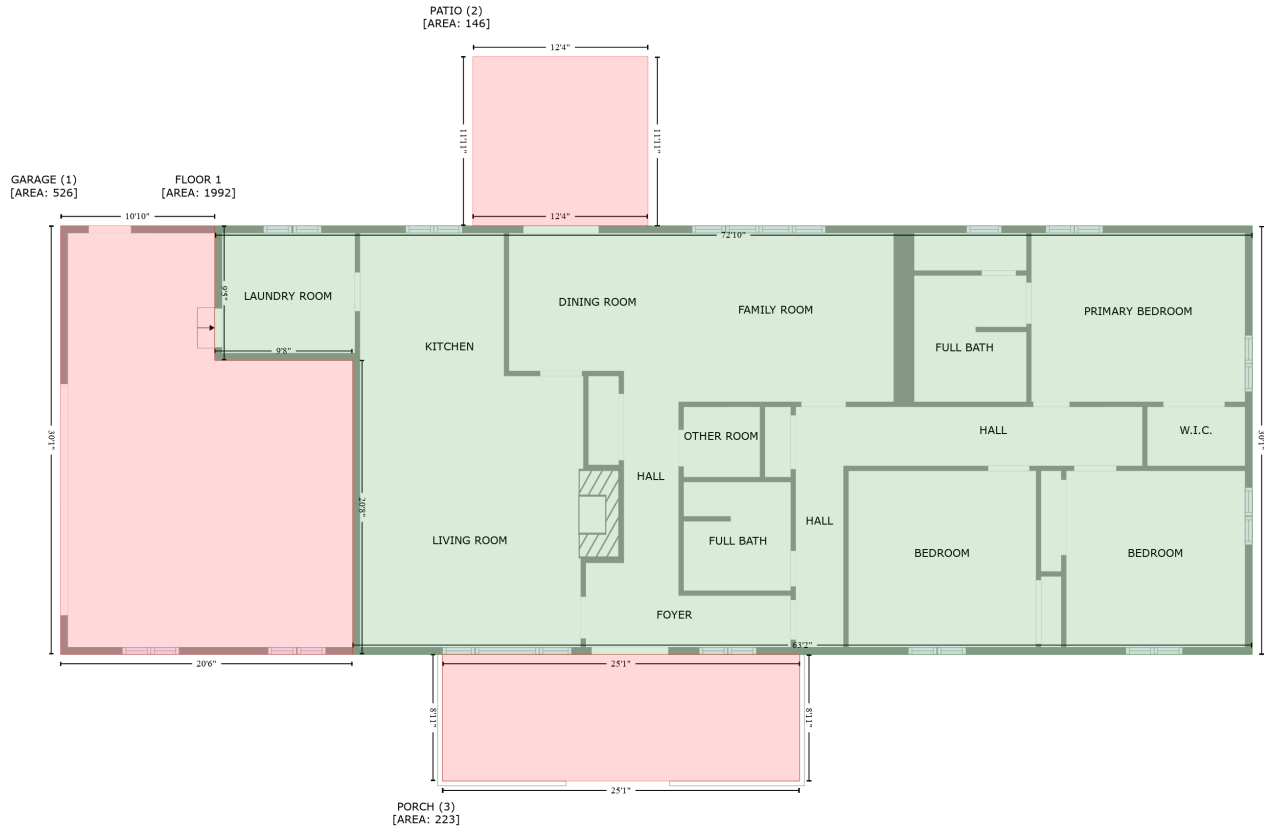


24 Middle Mount Road, Pisgah Forest, North Carolina 28768, United States

Gross Living Area: 1992 sq. ft



Space	Area (sq. ft)	Calculation <small>Coordinate Polygon Area Algorithm using inches</small>
FLOOR 1 (Living area)	1992	$-\left((849.4 + 849.4) * (352.4 - 713.5) + (849.4 + 91.3) * (713.5 - 713.5) + (91.3 + 91.3) * (713.5 - 465.7) + (91.3 + -24.9) * (465.7 - 465.7) + (-24.9 + -24.9) * (465.7 - 352.4) + (-24.9 + 849.4) * (352.4 - 352.4)\right) * 0.5 * 0.00694$
GARAGE (Non-living area)	526	$-\left((-24.9 + -24.9) * (352.4 - 465.7) + (-24.9 + 91.3) * (465.7 - 465.7) + (91.3 + 91.3) * (465.7 - 713.5) + (91.3 + -154.9) * (713.5 - 713.5) + (-154.9 + -154.9) * (713.5 - 352.4) + (-154.9 + -24.9) * (352.4 - 352.4)\right) * 0.5 * 0.00694$
PATIO (Non-living area)	146	$-\left((340.1 + 340.1) * (209.8 - 352.4) + (340.1 + 192.5) * (352.4 - 352.4) + (192.5 + 192.5) * (352.4 - 209.8) + (192.5 + 340.1) * (209.8 - 209.8)\right) * 0.5 * 0.00694$
PORCH (Non-living area)	223	$-\left((467.9 + 467.9) * (713.5 - 820.2) + (467.9 + 166.8) * (820.2 - 820.2) + (166.8 + 166.8) * (820.2 - 713.5) + (166.8 + 467.9) * (713.5 - 713.5)\right) * 0.5 * 0.00694$