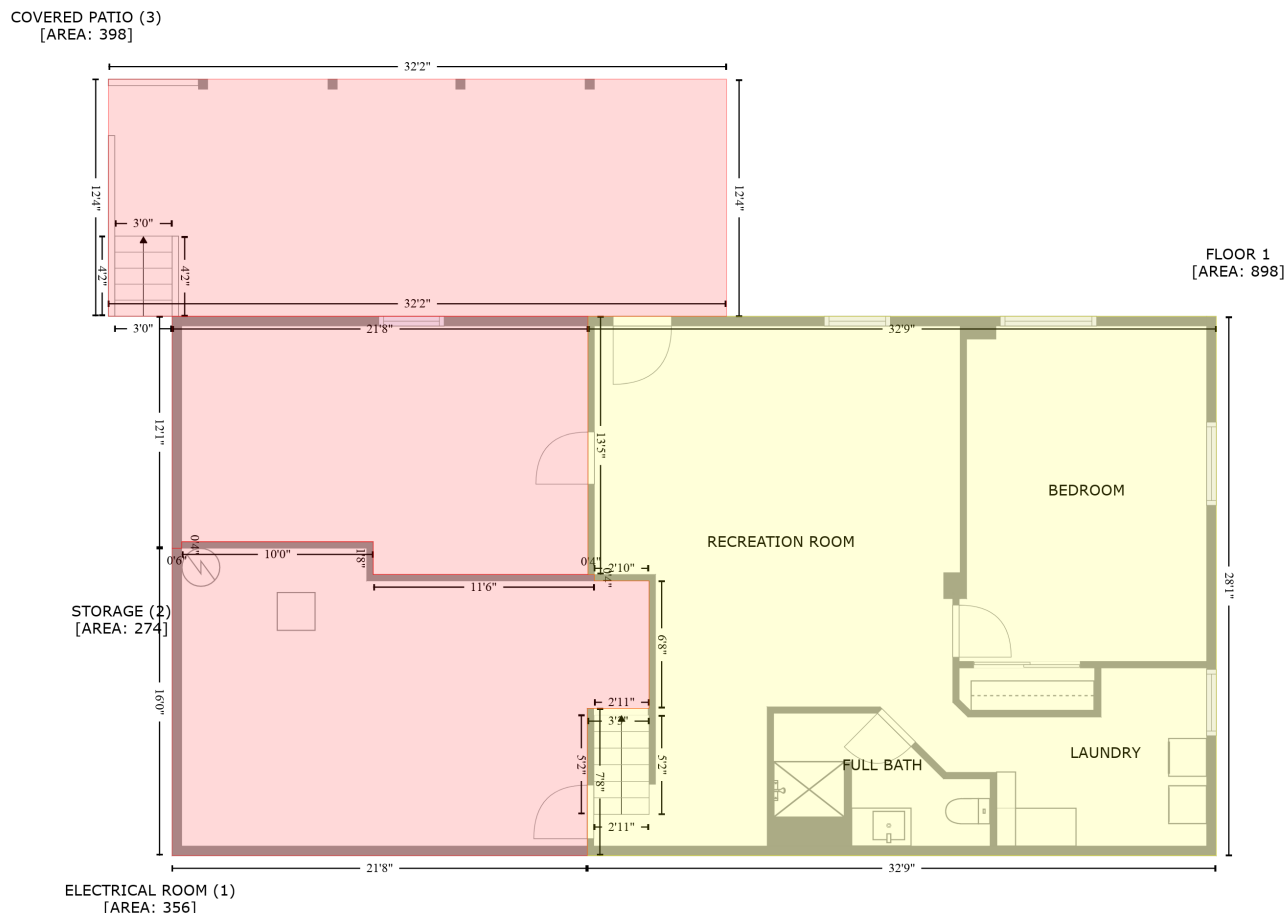


1552 10th Street Place Northwest, Forest Hills, Hickory, Catawba County, North Carolina, United States, 28601

Gross Living Area: 1522 sq. ft



Space	Area (sq. ft)	Calculation
FLOOR 1 (Living area)	898	$-\left((774.8 + 774.8) * (237.9 - 574.8) + (774.8 + 381.6) * (574.8 - 574.8) + (381.6 + 381.6) * (574.8 - 482.8) + (381.6 + 420.2) * (482.8 - 482.8) + (420.2 + 420.2) * (482.8 - 403.1) + (420.2 + 386) * (403.1 - 403.1) + (386 + 386) * (403.1 - 399.1) + (386 + 382) * (399.1 - 399.1) + (382 + 382) * (399.1 - 237.9) + (382 + 774.8) * (237.9 - 237.9)\right) * 0.5 * 0.00694$
ELECTRICAL ROOM (Non-living area)	356	$-\left((247.6 + 247.6) * (378.7 - 399.1) + (247.6 + 386) * (399.1 - 399.1) + (386 + 386) * (399.1 - 403.1) + (386 + 420.2) * (403.1 - 403.1) + (420.2 + 420.2) * (403.1 - 482.8) + (420.2 + 381.6) * (482.8 - 482.8) + (381.6 + 381.6) * (482.8 - 574.8) + (381.6 + 121.9) * (574.8 - 574.8) + (121.9 + 121.9) * (574.8 - 382.7) + (121.9 + 127.9) * (382.7 - 382.7) + (127.9 + 127.9) * (382.7 - 378.7) + (127.9 + 247.6) * (378.7 - 378.7)\right) * 0.5 * 0.00694$
STORAGE (Non-living area)	274	$-\left((382 + 382) * (237.9 - 399.1) + (382 + 247.6) * (399.1 - 399.1) + (247.6 + 247.6) * (399.1 - 378.7) + (247.6 + 127.9) * (378.7 - 378.7) + (127.9 + 127.9) * (378.7 - 382.7) + (127.9 + 121.9) * (382.7 - 382.7) + (121.9 + 121.9) * (382.7 - 237.9) + (121.9 + 382) * (237.9 - 237.9)\right) * 0.5 * 0.00694$
COVERED PATIO (Non-living area)	398	$-\left((468.6 + 468.6) * (89.7 - 237.9) + (468.6 + 82.1) * (237.9 - 237.9) + (82.1 + 82.1) * (237.9 - 89.7) + (82.1 + 468.6) * (89.7 - 89.7)\right) * 0.5 * 0.00694$

1552 10th Street Place Northwest, Forest Hills, Hickory, Catawba County, North Carolina, United States, 28601

Gross Living Area: 1522 sq. ft



Space	Area (sq. ft)	Calculation
FLOOR 2 (Living area)	1522	$-\left(\left(774.6 + 774.6\right) * \left(237.8 - 574.8\right) + \left(774.6 + 379.9\right) * \left(574.8 - 574.8\right) + \left(379.9 + 379.9\right) * \left(574.8 - 557.2\right) + \left(379.9 + 334.3\right) * \left(557.2 - 557.2\right) + \left(334.3 + 334.3\right) * \left(557.2 - 574.8\right) + \left(334.3 + 121.7\right) * \left(574.8 - 574.8\right) + \left(121.7 + 121.7\right) * \left(574.8 - 530.8\right) + \left(121.7 + 121.7\right) * \left(530.8 - 530.8\right) + \left(121.7 + 121.7\right) * \left(530.8 - 237.8\right) + \left(121.7 + 774.6\right) * \left(237.8 - 237.8\right)\right) * 0.5 * 0.00694$
SCREENED PORCH (Non-living area)	194	$-\left(\left(375.4 + 375.4\right) * \left(88.9 - 237.8\right) + \left(375.4 + 187.6\right) * \left(237.8 - 237.8\right) + \left(187.6 + 187.6\right) * \left(237.8 - 88.9\right) + \left(187.6 + 375.4\right) * \left(88.9 - 88.9\right)\right) * 0.5 * 0.00694$
PORCH (Non-living area)	201	$-\left(\left(379.9 + 379.9\right) * \left(557.2 - 574.8\right) + \left(379.9 + 401.1\right) * \left(574.8 - 574.8\right) + \left(401.1 + 401.1\right) * \left(574.8 - 679.5\right) + \left(401.1 + 133\right) * \left(679.5 - 679.5\right) + \left(133 + 133\right) * \left(679.5 - 574.8\right) + \left(133 + 334.3\right) * \left(574.8 - \right)$

1552 10th Street Place Northwest, Forest Hills, Hickory, Catawba County, North Carolina, United States, 28601

Gross Living Area: 1522 sq. ft

Space	Area (sq. ft)	Calculation <small>Coordinate Polygon Area Algorithm using inches</small>
DECK (Non-living area)	75	$574.8 + (334.3 + 334.3) * (574.8 - 557.2) + (334.3 + 379.9) * (557.2 - 557.2) * 0.5 * 0.00694$ $-((187.6 + 187.6) * (92.9 - 237.8) + (187.6 + 125.7) * (237.8 - 237.8) + (125.7 + 125.7) * (237.8 - 137.7) + (125.7 + 85.8) * (137.7 - 137.7) + (85.8 + 85.8) * (137.7 - 92.9) + (85.8 + 187.6) * (92.9 - 92.9)) * 0.5 * 0.00694$
FIREPLACE (Non-living area)	13	$-(121.7 + 121.7) * (460.1 - 530.8) + (121.7 + 95.1) * (530.8 - 530.8) + (95.1 + 95.1) * (530.8 - 460.1) + (95.1 + 121.7) * (460.1 - 460.1) * 0.5 * 0.00694$