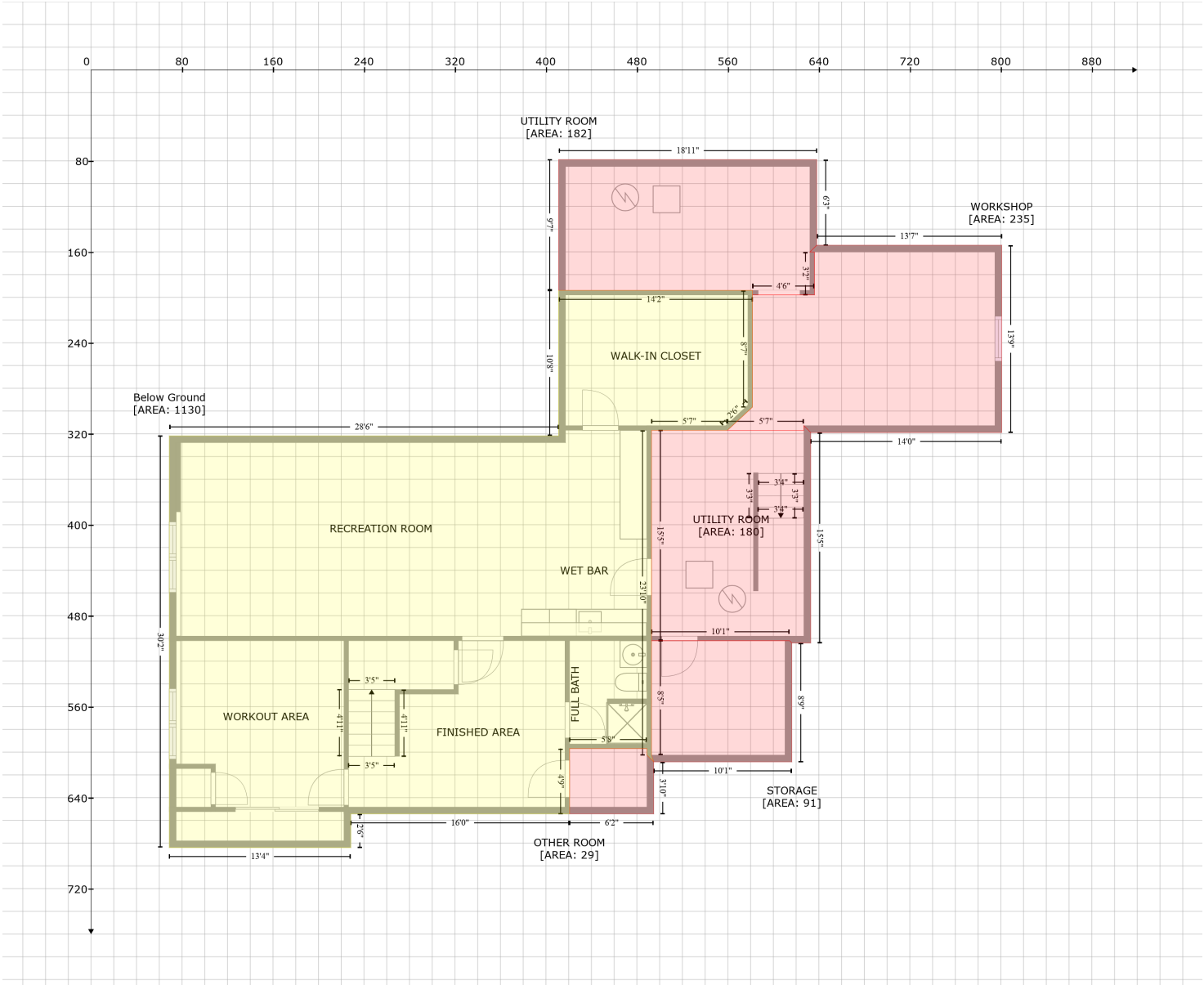


14 Bertis Adams Way, Westborough, Worcester County, Massachusetts, United States, 01581

Gross Living Area: 4502 sq. ft



Space	Area (sq. ft)	Calculation
Below Ground (Living area)	1130	Coordinate Polygon Area Algorithm using inches $-((581.7 + 581.7) * (193.9 - 296.5) + (581.7 + 559.6) * (296.5 - 316.9) + (559.6 + 492.8) * (316.9 - 316.9) + (492.8 + 492.8) * (316.9 - 602.6) + (492.8 + 494.8) * (602.6 - 608.6) + (494.8 + 488.8) * (608.6 - 602.6) + (488.8 + 488.8) * (602.6 - 596.8) + (488.8 + 420.8) * (596.8 - 596.8) + (420.8 + 420.8) * (596.8 - 654.3) + (420.8 + 228.4) * (654.3 - 654.3) + (228.4 + 228.4) * (654.3 - 684) + (228.4 + 68.8) * (684 - 684) + (68.8 + 68.8) * (684 - 321.8) + (68.8 + 411.2) * (321.8 - 321.8) + (411.2 + 411.2) * (321.8 - 193.9) + (411.2 + 581.7) * (193.9 - 193.9)) * 0.5 * 0.00694$
OTHER ROOM (Non-living area)	29	$-((488.8 + 488.8) * (596.8 - 602.6) + (488.8 + 494.8) * (602.6 - 608.6) + (494.8 + 494.8) * (608.6 - 654.3) + (494.8 + 420.8) * (654.3 - 654.3) + (420.8 + 420.8) * (654.3 - 596.8) + (420.8 + 488.8) * (596.8 - 596.8)) * 0.5 * 0.00694$
UTILITY ROOM (Non-living area)	180	$-((626.9 + 632.9) * (312.9 - 318.9) + (632.9 + 632.9) * (318.9 - 504) + (632.9 + 616.2) * (504 - 504) + (616.2 + 614.3) * (504 - 502) + (614.3 + 492.8) * (502 - 502) + (492.8 + 492.8) * (502 -$

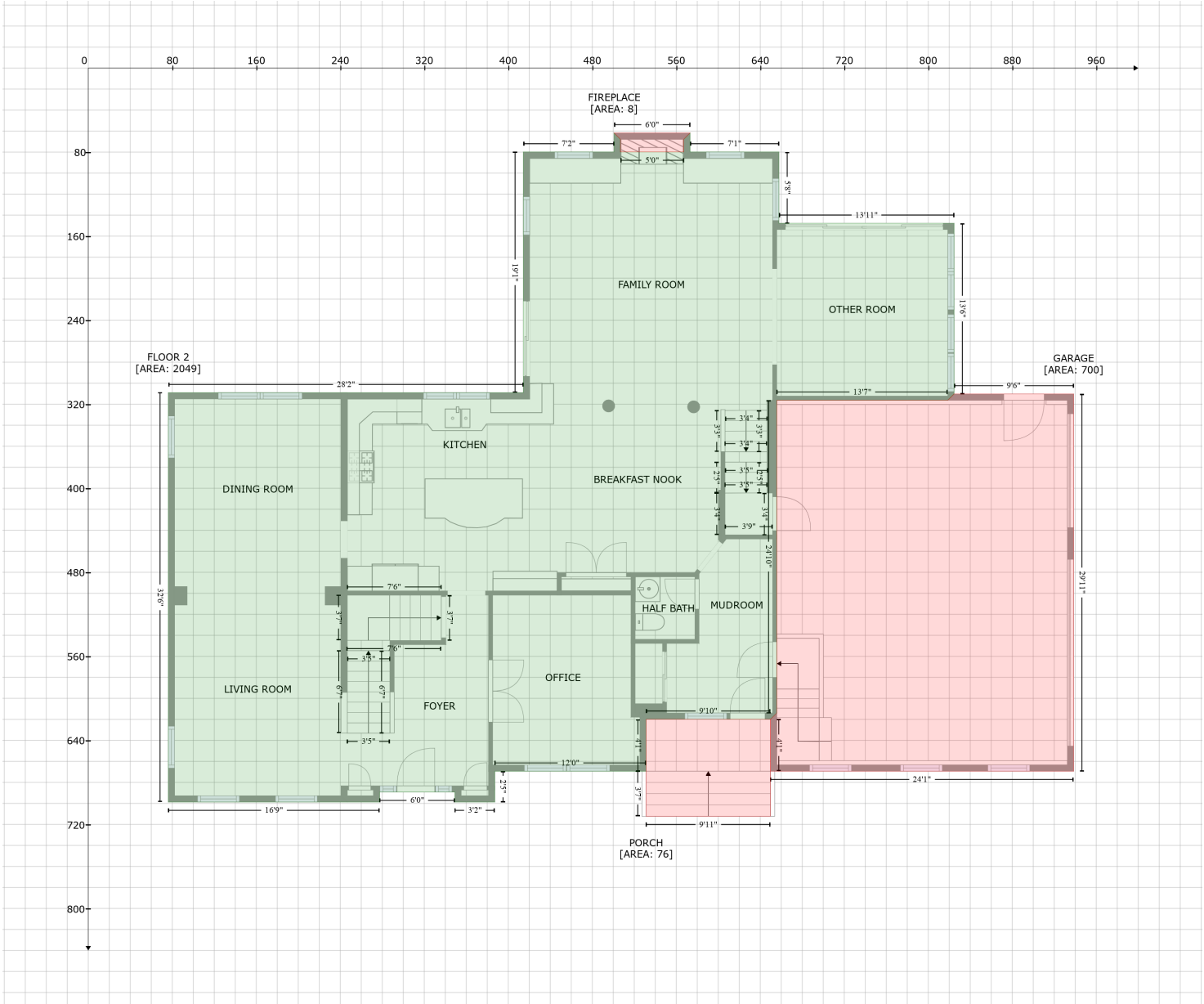
14 Bertis Adams Way, Westborough, Worcester County, Massachusetts, United States, 01581

Gross Living Area: 4502 sq. ft

Space	Area (sq. ft)	Calculation
Coordinate Polygon Area Algorithm using inches		
UTILITY ROOM (Non-living area)	182	$316.9 + (492.8 + 626.9) * (316.9 - 316.9) + (626.9 + 626.9) * (316.9 - 312.9)) * 0.5 * 0.00694$ $-((638.1 + 638.1) * (78.9 - 154.2) + (638.1 + 632.1) * (154.2 - 160.2) + (632.1 + 636.1) * (160.2 - 160.2) + (636.1 + 636.1) * (160.2 - 197.9) + (636.1 + 581.7) * (197.9 - 197.9) + (581.7 + 581.7) * (197.9 - 193.9) + (581.7 + 411.2) * (193.9 - 193.9) + (411.2 + 411.2) * (193.9 - 78.9) + (411.2 + 638.1) * (78.9 - 78.9)) * 0.5 * 0.00694$
STORAGE (Non-living area)	91	$-((614.3 + 616.2) * (502 - 504) + (616.2 + 616.2) * (504 - 608.6) + (616.2 + 494.8) * (608.6 - 608.6) + (494.8 + 492.8) * (608.6 - 602.6) + (492.8 + 492.8) * (602.6 - 502) + (492.8 + 614.3) * (502 - 502)) * 0.5 * 0.00694$
WORKSHOP (Non-living area)	235	$-((800.8 + 800.8) * (154.2 - 318.9) + (800.8 + 632.9) * (318.9 - 318.9) + (632.9 + 626.9) * (318.9 - 312.9) + (626.9 + 626.9) * (312.9 - 316.9) + (626.9 + 559.6) * (316.9 - 316.9) + (559.6 + 581.7) * (316.9 - 296.5) + (581.7 + 581.7) * (296.5 - 197.9) + (581.7 + 636.1) * (197.9 - 197.9) + (636.1 + 636.1) * (197.9 - 160.2) + (636.1 + 632.1) * (160.2 - 160.2) + (632.1 + 638.1) * (160.2 - 154.2) + (638.1 + 800.8) * (154.2 - 154.2)) * 0.5 * 0.00694$

14 Bertis Adams Way, Westborough, Worcester County, Massachusetts, United States, 01581

Gross Living Area: 4502 sq. ft



Space	Area (sq. ft)	Calculation
FLOOR 2 (Living area)	2049	$\begin{aligned} & -((573.1 + 573.1) * (61.8 - 79.9) + (573.1 + 657.8) * (79.9 - 79.9) + (657.8 + 657.8) * (79.9 - 147.8) + (657.8 + 824.6) * (147.8 - 147.8) + (824.6 + 824.6) * (147.8 - 310.2) + (824.6 + 818.6) * (310.2 - 316.2) + (818.6 + 655.8) * (316.2 - 316.2) + (655.8 + 655.8) * (316.2 - 614) + (655.8 + 649.8) * (614 - 620) + (649.8 + 531.4) * (620 - 620) + (531.4 + 531.4) * (620 - 669.3) + (531.4 + 387.2) * (669.3 - 669.3) + (387.2 + 387.2) * (669.3 - 698.7) + (387.2 + 349.2) * (698.7 - 698.7) + (349.2 + 349.2) * (698.7 - 689.3) + (349.2 + 277.5) * (689.3 - 689.3) + (277.5 + 277.5) * (689.3 - 698.7) + (277.5 + 76.2) * (698.7 - 698.7) + (76.2 + 76.2) * (698.7 - 309) + (76.2 + 414.4) * (309 - 309) + (414.4 + 414.4) * (309 - 79.9) + (414.4 + 500.8) * (79.9 - 79.9) + (500.8 + 500.8) * (79.9 - 61.8) + (500.8 + 506.8) * (61.8 - 67.8) + (506.8 + 506.8) * (67.8 - 79.9) + (506.8 + 567.1) * (79.9 - 79.9) + (567.1 + 567.1) * (79.9 - 67.8) + (567.1 + 573.1) * (67.8 - 61.8)) * 0.5 + 0.00694 \end{aligned}$
GARAGE	700	$-((938.5 + 938.5) * (310.2 - 669.3) + (938.5 + 649.8) * (669.3 - 669.3) + (649.8 + 649.8) * (669.3 -$

14 Bertis Adams Way, Westborough, Worcester County, Massachusetts, United States, 01581

Gross Living Area: 4502 sq. ft

Space	Area (sq. ft)	Calculation
(Non-living area)		$620 + (649.8 + 655.8) * (620 - 614) + (655.8 + 655.8) * (614 - 316.2) + (655.8 + 818.6) * (316.2 - 316.2) + (818.6 + 824.6) * (316.2 - 310.2) + (824.6 + 938.5) * (310.2 - 310.2)) * 0.5 * 0.00694$
PORCH (Non-living area)	76	$-((649.8 + 649.8) * (620 - 712.2) + (649.8 + 531.2) * (712.2 - 712.2) + (531.2 + 531.2) * (712.2 - 669.3) + (531.2 + 531.4) * (669.3 - 669.3) + (531.4 + 531.4) * (669.3 - 620) + (531.4 + 649.8) * (620 - 620)) * 0.5 * 0.00694$
FIREPLACE (Non-living area)	8	$-((573.1 + 567.1) * (61.8 - 67.8) + (567.1 + 567.1) * (67.8 - 79.9) + (567.1 + 506.8) * (79.9 - 79.9) + (506.8 + 506.8) * (79.9 - 67.8) + (506.8 + 500.8) * (67.8 - 61.8) + (500.8 + 573.1) * (61.8 - 61.8)) * 0.5 * 0.00694$

14 Bertis Adams Way, Westborough, Worcester County, Massachusetts, United States, 01581

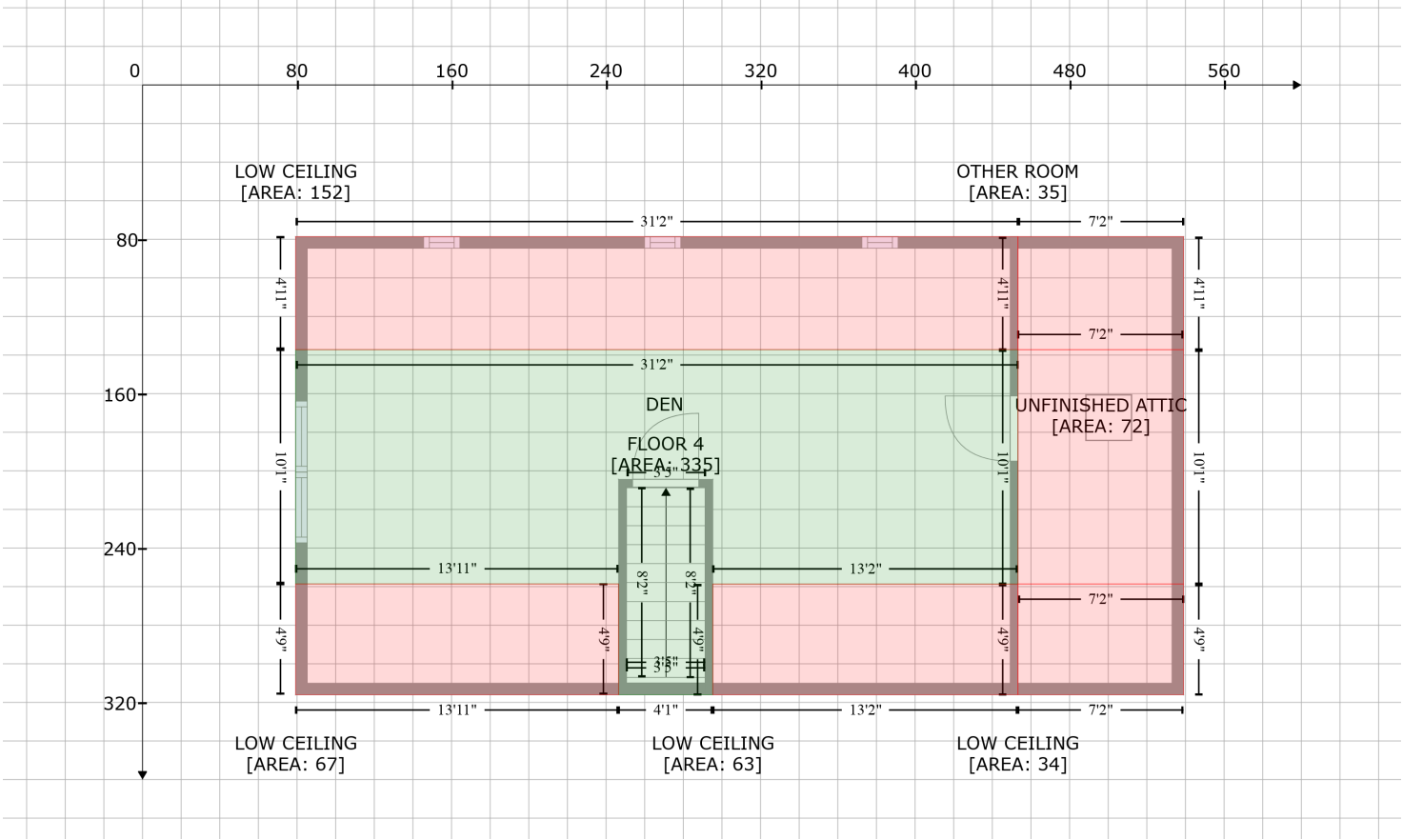
Gross Living Area: 4502 sq. ft



Space	Area (sq. ft)	Calculation
FLOOR 3 (Living area)	2118	Coordinate Polygon Area Algorithm using inches $-((848.4 + 848.4) * (61.7 - 84.9) + (848.4 + 923.6) * (84.9 - 84.9) + (923.6 + 923.6) * (84.9 - 82.5) + (923.6 + 929.6) * (82.5 - 76.5) + (929.6 + 929.6) * (76.5 - 406.5) + (929.6 + 923.6) * (406.5 - 400.5) + (923.6 + 923.6) * (400.5 - 396.9) + (923.6 + 849.3) * (396.9 - 396.9) + (849.3 + 849.3) * (396.9 - 424.2) + (849.3 + 649) * (424.2 - 424.2) + (649 + 649) * (424.2 - 368.7) + (649 + 528.7) * (368.7 - 368.7) + (528.7 + 528.7) * (368.7 - 424.2) + (528.7 + 389) * (424.2 - 424.2) + (389 + 389) * (424.2 - 446.6) + (389 + 78) * (446.6 - 446.6) + (78 + 78) * (446.6 - 61.7) + (78 + 848.4) * (61.7 - 61.7)) * 0.5 * 0.00694$
LOW CEILING (Non-living area)	12	$-((923.6 + 923.6) * (396.9 - 400.5) + (923.6 + 929.6) * (400.5 - 406.5) + (929.6 + 905) * (406.5 - 406.5) + (905 + 905) * (406.5 - 424.2) + (905 + 849.3) * (424.2 - 424.2) + (849.3 + 849.3) * (424.2 - 396.9) + (849.3 + 923.6) * (396.9 - 396.9)) * 0.5 * 0.00694$
LOW CEILING (Non-living area)	10	$-((905 + 905) * (61.7 - 76.5) + (905 + 929.6) * (76.5 - 76.5) + (929.6 + 923.6) * (76.5 - 82.5) + (923.6 + 923.6) * (82.5 - 84.9) + (923.6 + 848.4) * (84.9 - 84.9) + (848.4 + 848.4) * (84.9 - 61.7) + (848.4 + 905) * (61.7 - 61.7)) * 0.5 * 0.00694$

14 Bertis Adams Way, Westborough, Worcester County, Massachusetts, United States, 01581

Gross Living Area: 4502 sq. ft



Space	Area (sq. ft)	Calculation
FLOOR 4 (Living area)	335	$-\left((453.2 + 453.2) * (137.2 - 258.7) + (453.2 + 295.3) * (258.7 - 258.7) + (295.3 + 295.3) * (258.7 - 316.1) + (295.3 + 246.5) * (316.1 - 316.1) + (246.5 + 246.5) * (316.1 - 258.6) + (246.5 + 79.3) * (258.6 - 258.6) + (79.3 + 79.3) * (258.6 - 137.2) + (79.3 + 453.2) * (137.2 - 137.2)\right) * 0.5 * 0.00694$
LOW CEILING (Non-living area)	67	$-\left((246.5 + 246.5) * (258.6 - 316.1) + (246.5 + 79.3) * (316.1 - 316.1) + (79.3 + 79.3) * (316.1 - 258.6) + (79.3 + 246.5) * (258.6 - 258.6)\right) * 0.5 * 0.00694$
LOW CEILING (Non-living area)	63	$-\left((453.2 + 453.2) * (258.7 - 316.1) + (453.2 + 295.3) * (316.1 - 316.1) + (295.3 + 295.3) * (316.1 - 258.7) + (295.3 + 453.2) * (258.7 - 258.7)\right) * 0.5 * 0.00694$
LOW CEILING (Non-living area)	34	$-\left((539 + 539) * (258.6 - 316.1) + (539 + 453.2) * (316.1 - 316.1) + (453.2 + 453.2) * (316.1 - 258.6) + (453.2 + 539) * (258.6 - 258.6)\right) * 0.5 * 0.00694$
LOW CEILING (Non-living area)	152	$-\left((453.2 + 453.2) * (78.7 - 137.2) + (453.2 + 79.3) * (137.2 - 137.2) + (79.3 + 79.3) * (137.2 - 78.7) + (79.3 + 453.2) * (78.7 - 78.7)\right) * 0.5 * 0.00694$
OTHER ROOM (Non-living area)	35	$-\left((539 + 539) * (78.7 - 137.2) + (539 + 453.2) * (137.2 - 137.2) + (453.2 + 453.2) * (137.2 - 78.7) + (453.2 + 539) * (78.7 - 78.7)\right) * 0.5 * 0.00694$
UNFINISHED ATTIC (Non-living area)	72	$-\left((539 + 539) * (137.2 - 258.6) + (539 + 453.2) * (258.6 - 258.6) + (453.2 + 453.2) * (258.6 - 137.2) + (453.2 + 539) * (137.2 - 137.2)\right) * 0.5 * 0.00694$