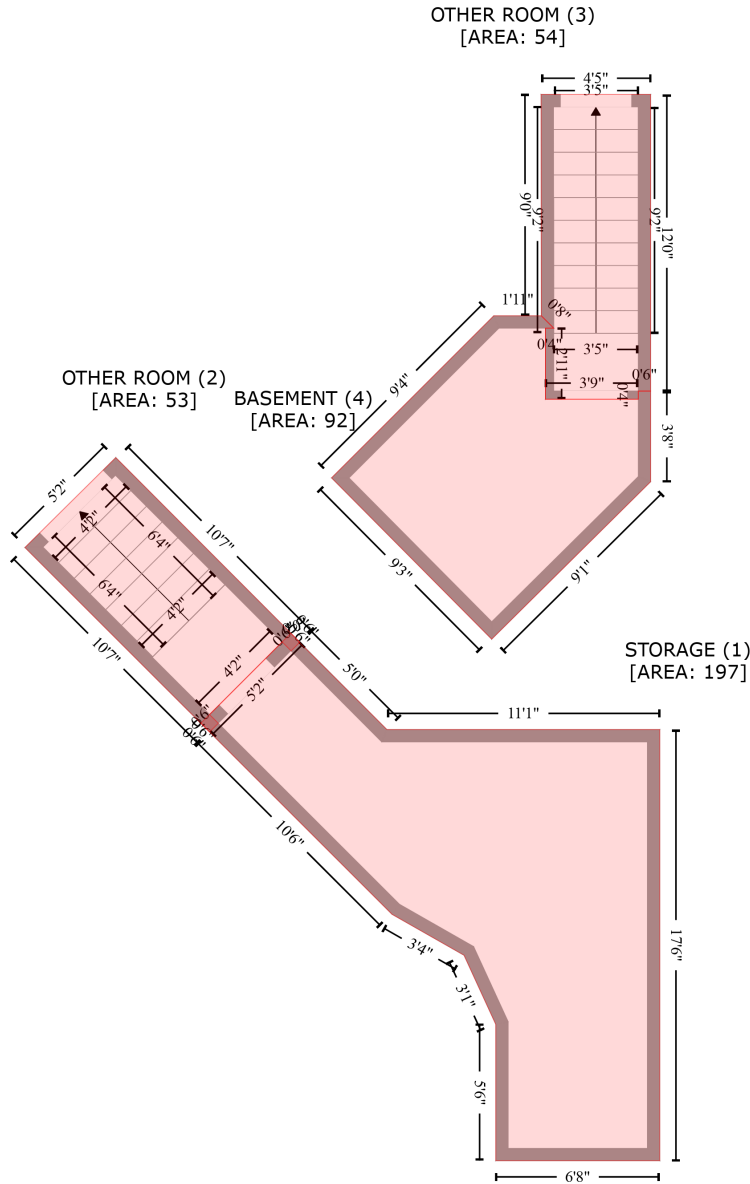


110 West Kings Ridge, Gaffney, South Carolina 29341, United States

Gross Living Area: 9360 sq. ft



Space	Area (sq. ft)	Calculation <small>Coordinate Polygon Area Algorithm using inches</small>
STORAGE (Non-living area)	197	$-\left((431 + 435.2) * (644.1 - 648.4) + (435.2 + 435) * (648.4 - 648.4) + (435 + 477.7) * (648.4 - 691) + (477.7 + 610.5) * (691 - 691) + (610.5 + 610.5) * (691 - 901) + (610.5 + 530.7) * (901 - 901) + (530.7 + 530.7) * (901 - 834.6) + (530.7 + 515.2) * (834.6 - 800.9) + (515.2 + 480.2) * (800.9 - 781) + (480.2 + 391.4) * (781 - 692.2) + (391.4 + 387.2) * (692.2 - 687.9) + (387.2 + 431) * (687.9 - 644.1)\right) * 0.5 + 0.00694$
OTHER ROOM	53	$-\left((345.8 + 435.4) * (558.6 - 648.5) + (435.4 + 431.1) * (648.5 - 652.7) + (431.1 + 426.8) * (652.7 - \right.$

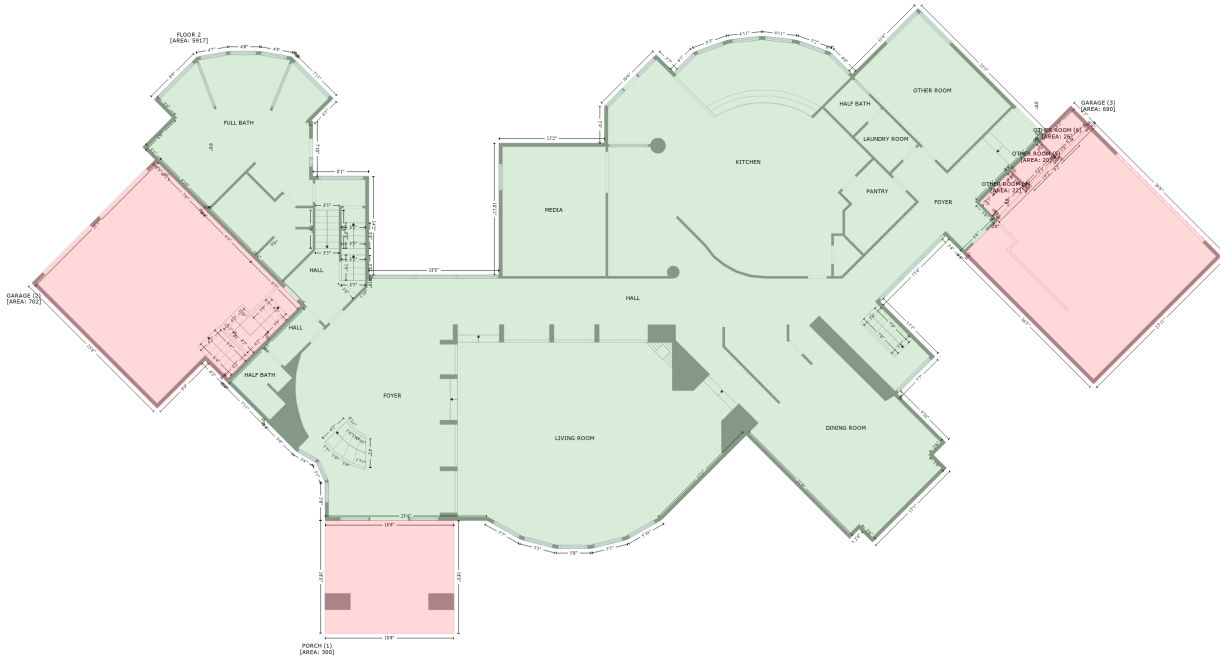
110 West Kings Ridge, Gaffney, South Carolina 29341, United States

Gross Living Area: 9360 sq. ft

Space	Area (sq. ft)	Calculation <small>Coordinate Polygon Area Algorithm using inches</small>
(Non-living area)		$648.4 + (426.8 + 391.5) * (648.4 - 683.7) + (391.5 + 395.7) * (683.7 - 688) + (395.7 + 391.5) * (688 - 692.2) + (391.5 + 301.6) * (692.2 - 602.4) + (301.6 + 345.8) * (602.4 - 558.6) * 0.5 * 0.00694$
OTHER ROOM (Non-living area)	54	$-((606 + 606) * (381.7 - 526.2) + (606 + 600) * (526.2 - 526.2) + (600 + 600) * (526.2 - 530.2) + (600 + 554.9) * (530.2 - 530.2) + (554.9 + 554.9) * (530.2 - 495.6) + (554.9 + 558.9) * (495.6 - 495.6) + (558.9 + 552.8) * (495.6 - 489.6) + (552.8 + 552.7) * (489.6 - 381.7) + (552.7 + 606) * (381.7 - 381.7)) * 0.5 * 0.00694$
BASEMENT (Non-living area)	92	$-((552.8 + 558.9) * (489.6 - 495.6) + (558.9 + 554.9) * (495.6 - 495.6) + (554.9 + 554.9) * (495.6 - 530.2) + (554.9 + 600) * (530.2 - 530.2) + (600 + 600) * (530.2 - 526.2) + (600 + 606) * (526.2 - 526.2) + (606 + 606) * (526.2 - 570.3) + (606 + 528.7) * (570.3 - 647) + (528.7 + 450.8) * (647 - 568.5) + (450.8 + 529.7) * (568.5 - 489.6) + (529.7 + 552.8) * (489.6 - 489.6)) * 0.5 * 0.00694$

110 West Kings Ridge, Gaffney, South Carolina 29341, United States

Gross Living Area: 9360 sq. ft



Space	Area (sq. ft)	Calculation
FLOOR 2 (Living area)	5917	Coordinate Polygon Area Algorithm using inches $-((488.9 + 325.1) * (530.4 - 366.5) + (325.1 + 325.1) * (366.5 - 366.4) + (325.1 + 241.6) * (366.4 - 283.1) + (241.6 + 215.8) * (283.1 - 257.2) + (215.8 + 266.7) * (257.2 - 206.3) + (266.7 + 235.8) * (206.3 - 175.4) + (235.8 + 309.3) * (175.4 - 101.8) + (309.3 + 363.9) * (101.8 - 92.1) + (363.9 + 418.3) * (92.1 - 92.1) + (418.3 + 473) * (92.1 - 101.6) + (473 + 473.1) * (101.6 - 101.8) + (473.1 + 475.2) * (101.8 - 103.9) + (475.2 + 477.8) * (103.9 - 106.4) + (477.8 + 544.7) * (106.4 - 173.3) + (544.7 + 507) * (173.3 - 210.9) + (507 + 509.3) * (210.9 - 213.2) + (509.3 + 509.3) * (213.2 - 307.3) + (509.3 + 606) * (307.3 - 307.3) + (606 + 606) * (307.3 - 477.7) + (606 + 830.5) * (477.7 - 477.7) + (830.5 + 830.5) * (477.7 - 250.4) + (830.5 + 1012.6) * (250.4 - 250.4) + (1012.6 + 1012.6) * (250.4 - 186.9) + (1012.6 + 1101.8) * (186.9 - 97.7) + (1101.8 + 1132.2) * (97.7 - 128.1) + (1132.2 + 1167) * (128.1 - 93.3) + (1167 + 1226) * (93.3 - 72.4) + (1226 + 1284.5) * (72.4 - 65.9) + (1284.5 + 1343.5) * (65.9 - 72.6) + (1343.5 + 1402.2) * (72.6 - 93.3) + (1402.2 + 1402.1) * (93.3 - 93.3) + (1402.1 + 1440.2) * (93.3 - 131.3) + (1440.2 + 1553.5) * (131.3 - 18.1) + (1553.5 + 1769.2) * (18.1 - 233.9) + (1769.2 + 1765) * (233.9 - 238.1) + (1765 + 1769.2) * (238.1 - 242.4) + (1769.2 + 1764.5) * (242.4 - 247.2) + (1764.5 + 1764.5) * (247.2 - 247.3) + (1764.5 + 1762.5) * (247.3 - 249.2) + (1762.5 + 1714.2) * (249.2 - 297.6) + (1714.2 + 1714.2) * (297.6 - 297.7) + (1714.2 + 1711.3) * (297.7 - 300.5) + (1711.3 + 1711.2) * (300.5 - 300.4) + (1711.2 + 1659) * (300.4 - 352.6) + (1659 + 1690.4) * (352.6 - 383.9) + (1690.4 + 1687.5) * (383.9 - 386.7) + (1687.5 + 1684.6) * (386.7 - 383.9) + (1684.6 + 1687.5) * (383.9 - 386.7) + (1687.5 + 1632.2) * (386.7 - 441.5) + (1632.2 + 1629.2) * (441.5 - 438.7) + (1629.2 + 1601.2) * (438.7 - 410.5) + (1601.2 + 1488) * (410.5 - 523.6) + (1488 + 1582.4) * (523.6 - 618) + (1582.4 + 1518.1) * (618 - 681.9) + (1518.1 + 1517.7) * (681.9 - 682.7) + (1517.7 + 1601.2) * (682.7 - 766.2) + (1601.2 + 1579.9) * (766.2 - 787.5) + (1579.9 + 1602.8) * (787.5 - 810.4) + (1602.8 + 1474.9) * (810.4 - 938.3) + (1474.9 + 1452) * (938.3 - 915.4) + (1452 + 1435.3) * (915.4 - 932.1) + (1435.3 + 1257) * (932.1 - 753.8) + (1257 + 1111.2) * (753.8 - 899.7) + (1111.2 + 1050.8) * (899.7 - 934) + (1050.8 + 989.7) * (934 - 949.2) + (989.7 + 929.5) * (949.2 - 949.2) + (929.5 + 868.6) * (949.2 - 933.6) + (868.6 + 810.2) * (933.6 - 901) + (810.2 + 530.7) * (901 - 901) + (530.7 + 530.7) * (901 - 834.6) + (530.7 + 515.2) * (834.6 - 800.9) + (515.2 + 480.2) * (800.9 - 781) + (480.2 + 433.9) * (781 - 734.6) + (433.9 + 431.1) * (734.6 - 731.9) + (431.1 + 431.1) * (731.9 - 731.5) + (431.1 + 363.5) * (731.5 - 664.3) + (363.5 + 363.4) * (664.3 - 664.2) + (363.4 + 359.3) * (664.2 - 660) +$

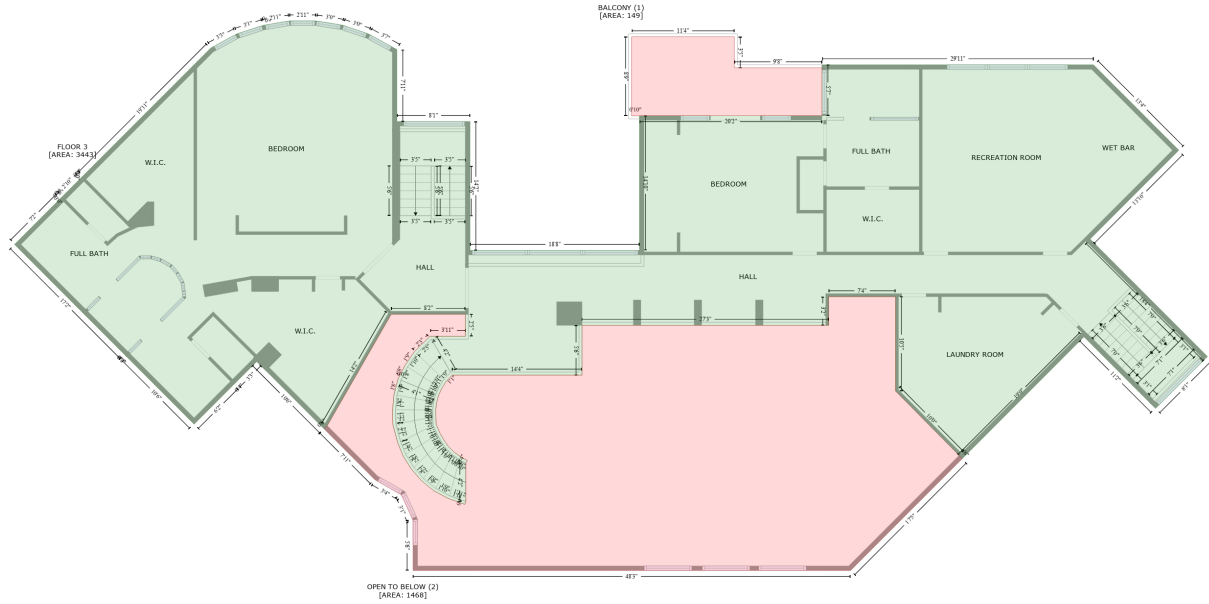
110 West Kings Ridge, Gaffney, South Carolina 29341, United States

Gross Living Area: 9360 sq. ft

Space	Area (sq. ft)	Calculation <small>Coordinate Polygon Area Algorithm using inches</small>
PORCH (Non-living area)	300	$(359.3 + 488.9) * (660 - 530.4) * 0.5 * 0.00694$ $-((752.9 + 752.9) * (901 - 1095.6) + (752.9 + 530.7) * (1095.6 - 1095.6) + (530.7 + 530.7) * (1095.6 - 901) + (530.7 + 752.9) * (901 - 901)) * 0.5 * 0.00694$
GARAGE (Non-living area)	702	$-((237.3 + 241.6) * (278.8 - 283.1) + (241.6 + 256.1) * (283.1 - 297.6) + (256.1 + 256.5) * (297.6 - 297.7) + (256.5 + 265.9) * (297.7 - 307.3) + (265.9 + 325) * (307.3 - 366.4) + (325 + 325.1) * (366.4 - 366.5) + (325.1 + 328) * (366.5 - 369.3) + (328 + 327.9) * (369.3 - 369.3) + (327.9 + 407.9) * (369.3 - 449.2) + (407.9 + 407.8) * (449.2 - 449.3) + (407.8 + 488.9) * (449.3 - 530.4) + (488.9 + 363.5) * (530.4 - 655.8) + (363.5 + 359.4) * (655.8 - 659.8) + (359.4 + 323.8) * (659.8 - 624.6) + (323.8 + 240.8) * (624.6 - 707.6) + (240.8 + 24.8) * (707.6 - 491.5) + (24.8 + 237.3) * (491.5 - 278.8)) * 0.5 * 0.00694$
GARAGE (Non-living area)	690	$-((1850.5 + 2076.5) * (219.4 - 445.4) + (2076.5 + 1856.3) * (445.4 - 665.6) + (1856.3 + 1632.4) * (665.6 - 441.6) + (1632.4 + 1636.6) * (441.6 - 437.4) + (1636.6 + 1687.4) * (437.4 - 386.7) + (1687.4 + 1687.5) * (386.7 - 386.7) + (1687.5 + 1690.4) * (386.7 - 383.9) + (1690.4 + 1687.4) * (383.9 - 381.1) + (1687.4 + 1850.5) * (381.1 - 219.4)) * 0.5 * 0.00694 + -((1826.3 + 1794.8) * (249.2 - 280.3) + (1794.8 + 1748.5) * (280.3 - 326.3) + (1748.5 + 1826.3) * (326.3 - 249.2)) * 0.5 * 0.00694$
OTHER ROOM (Non-living area)	22	$-((1714.2 + 1745.5) * (297.7 - 329.2) + (1745.5 + 1742.6) * (329.2 - 332.1) + (1742.6 + 1739.7) * (332.1 - 329.2) + (1739.7 + 1687.4) * (329.2 - 381.1) + (1687.4 + 1672.8) * (381.1 - 366.4) + (1672.8 + 1659.1) * (366.4 - 352.6) + (1659.1 + 1679.5) * (352.6 - 332.1) + (1679.5 + 1682.3) * (332.1 - 329.2) + (1682.3 + 1704.3) * (329.2 - 307.3) + (1704.3 + 1711.3) * (307.3 - 300.5) + (1711.3 + 1714.2) * (300.5 - 297.7)) * 0.5 * 0.00694$
OTHER ROOM (Non-living area)	20	$-((1764.5 + 1796) * (247.3 - 279.1) + (1796 + 1793.2) * (279.1 - 281.9) + (1793.2 + 1790.4) * (281.9 - 279.1) + (1790.4 + 1742.5) * (279.1 - 326.4) + (1742.5 + 1714.2) * (326.4 - 297.6) + (1714.2 + 1761.4) * (297.6 - 250.4) + (1761.4 + 1762.5) * (250.4 - 249.2) + (1762.5 + 1764.5) * (249.2 - 247.3)) * 0.5 * 0.00694$
OTHER ROOM (Non-living area)	26	$-((1817.1 + 1853.3) * (186.1 - 222.3) + (1853.3 + 1849.1) * (222.3 - 226.5) + (1849.1 + 1846.1) * (226.5 - 223.6) + (1846.1 + 1793.3) * (223.6 - 276.2) + (1793.3 + 1764.6) * (276.2 - 247.2) + (1764.6 + 1769.2) * (247.2 - 242.4) + (1769.2 + 1765) * (242.4 - 238.2) + (1765 + 1817.1) * (238.2 - 186.1)) * 0.5 * 0.00694$

110 West Kings Ridge, Gaffney, South Carolina 29341, United States

Gross Living Area: 9360 sq. ft



Space	Area (sq. ft)	Calculation
FLOOR 3 (Living area)	3443	Coordinate Polygon Area Algorithm using inches $-((151.9 + 149.5) * (618.6 - 616.1) + (149.5 + 148.9) * (616.1 - 615.6) + (148.9 + 3.1) * (615.6 - 469.8) + (3.1 + 63.8) * (469.8 - 409.1) + (63.8 + 63.9) * (409.1 - 409.1) + (63.9 + 66.6) * (409.1 - 406.4) + (66.6 + 66.5) * (406.4 - 406.3) + (66.5 + 90.6) * (406.3 - 382.4) + (90.6 + 93.8) * (382.4 - 379.4) + (93.8 + 93.8) * (379.4 - 379.2) + (93.8 + 262.7) * (379.2 - 210.3) + (262.7 + 297) * (210.3 - 191.6) + (297 + 332.3) * (191.6 - 180.3) + (332.3 + 332.1) * (180.3 - 180.2) + (332.1 + 367) * (180.2 - 174.3) + (367 + 402.2) * (174.3 - 174.3) + (402.2 + 437.4) * (174.3 - 179.9) + (437.4 + 471.7) * (179.9 - 191.5) + (471.7 + 509.3) * (191.5 - 212.1) + (509.3 + 509.3) * (212.1 - 307.3) + (509.3 + 606) * (307.3 - 307.3) + (606 + 606) * (307.3 - 477.7) + (606 + 830.5) * (477.7 - 477.7) + (830.5 + 830.5) * (477.7 - 299.6) + (830.5 + 1072.1) * (299.6 - 299.6) + (1072.1 + 1072.1) * (299.6 - 232.3) + (1072.1 + 1431.5) * (232.3 - 232.3) + (1431.5 + 1544.5) * (232.3 - 345.2) + (1544.5 + 1427) * (345.2 - 462.7) + (1427 + 1582.4) * (462.7 - 618) + (1582.4 + 1513.7) * (618 - 686.7) + (1513.7 + 1418.9) * (686.7 - 591.9) + (1418.9 + 1257.8) * (591.9 - 753.1) + (1257.8 + 1253.5) * (753.1 - 748.8) + (1253.5 + 1169.4) * (748.8 - 663.7) + (1169.4 + 1169.4) * (663.7 - 538.9) + (1169.4 + 1081.1) * (538.9 - 538.9) + (1081.1 + 1081.1) * (538.9 - 576.8) + (1081.1 + 754.4) * (576.8 - 576.8) + (754.4 + 754.4) * (576.8 - 642.6) + (754.4 + 582.3) * (642.6 - 642.6) + (582.3 + 574.1) * (642.6 - 651.7) + (574.1 + 568.5) * (651.7 - 660.7) + (568.5 + 564.5) * (660.7 - 669.4) + (564.5 + 561.9) * (669.4 - 679.2) + (561.9 + 560.7) * (679.2 - 688.9) + (560.7 + 560.9) * (688.9 - 698) + (560.9 + 561.3) * (698 - 707.9) + (561.3 + 566.4) * (707.9 - 719.4) + (566.4 + 571.4) * (719.4 - 728.1) + (571.4 + 577.6) * (728.1 - 737.1) + (577.6 + 585.1) * (737.1 - 744.5) + (585.1 + 594.3) * (744.5 - 751) + (594.3 + 602.5) * (751 - 755.6) + (602.5 + 600.5) * (755.6 - 759.1) + (600.5 + 600.5) * (759.1 - 809.8) + (600.5 + 599.2) * (809.8 - 813.5) + (599.2 + 577.3) * (813.5 - 805.8) + (577.3 + 558.1) * (805.8 - 795.5) + (558.1 + 541.7) * (795.5 - 782.1) + (541.7 + 528.4) * (782.1 - 766.7) + (528.4 + 517.5) * (766.7 - 749.4) + (517.5 + 510.4) * (749.4 - 732.1) + (510.4 + 503.9) * (732.1 - 707.5) + (503.9 + 503.5) * (707.5 - 688.3) + (503.5 + 505.5) * (688.3 - 668.5) + (505.5 + 510.8) * (668.5 - 647.8) + (510.8 + 520) * (647.8 - 629.7) + (520 + 532.5) * (629.7 - 611.6) + (532.5 + 553.3) * (611.6 - 591.3) + (553.3 + 600) * (591.3 - 591.3) + (600 + 600) * (591.3 - 562.2) + (600 + 501.8) * (562.2 - 562.2) + (501.8 + 417.1) * (562.2 - 709.4) + (417.1 + 412.9) * (709.4 - 713.7) + (412.9 + 323.8) * (713.7 - 624.6) + (323.8 + 296.1) * (624.6 - 652.3) + (296.1 + 296) * (652.3 - 652.3) + (296 + 293.3) * (652.3 - 655.1) + (293.3 + 240.8) * (655.1 - 707.5) + (240.8 + 151.9) * (707.5 - 618.6)) * 0.5 * 0.00694$
BALCONY	149	$-((955.9 + 955.9) * (195.3 - 236.3) + (955.9 + 1072.1) * (236.3 - 236.3) + (1072.1 + 1072.1) * (236.3 - 236.3)) * 0.5 * 0.00694$

110 West Kings Ridge, Gaffney, South Carolina 29341, United States

Gross Living Area: 9360 sq. ft

Space	Area (sq. ft)	Calculation <small>Coordinate Polygon Area Algorithm using inches</small>
(Non-living area)		$(236.3 - 299.6) + (1072.1 + 830.5) * (299.6 - 299.6) + (830.5 + 820.1) * (299.6 - 299.8) + (820.1 + 820.1) * (299.8 - 195.3) + (820.1 + 955.9) * (195.3 - 195.3)) * 0.5 * 0.00694$
OPEN TO BELOW (Non-living area)	1468	$-((1169.4 + 1169.4) * (538.9 - 663.7) + (1169.4 + 1253.5) * (663.7 - 748.8) + (1253.5 + 1257.8) * (748.8 - 753.1) + (1257.8 + 1109.9) * (753.1 - 901) + (1109.9 + 530.7) * (901 - 901) + (530.7 + 530.7) * (901 - 834.6) + (530.7 + 515.2) * (834.6 - 800.9) + (515.2 + 480.2) * (800.9 - 781) + (480.2 + 412.9) * (781 - 713.7) + (412.9 + 417.1) * (713.7 - 709.4) + (417.1 + 501.8) * (709.4 - 562.2) + (501.8 + 600) * (562.2 - 562.2) + (600 + 600) * (562.2 - 591.3) + (600 + 553.3) * (591.3 - 591.3) + (553.3 + 532.5) * (591.3 - 611.6) + (532.5 + 520) * (611.6 - 629.7) + (520 + 510.8) * (629.7 - 647.8) + (510.8 + 505.5) * (647.8 - 668.5) + (505.5 + 503.5) * (668.5 - 688.3) + (503.5 + 503.9) * (688.3 - 707.5) + (503.9 + 510.4) * (707.5 - 732.1) + (510.4 + 517.5) * (732.1 - 749.4) + (517.5 + 528.4) * (749.4 - 766.7) + (528.4 + 541.7) * (766.7 - 782.1) + (541.7 + 558.1) * (782.1 - 795.5) + (558.1 + 577.3) * (795.5 - 805.8) + (577.3 + 599.2) * (805.8 - 813.5) + (599.2 + 600.5) * (813.5 - 809.8) + (600.5 + 600.5) * (809.8 - 759.1) + (600.5 + 602.5) * (759.1 - 755.6) + (602.5 + 594.3) * (755.6 - 751) + (594.3 + 585.1) * (751 - 744.5) + (585.1 + 577.6) * (744.5 - 737.1) + (577.6 + 571.4) * (737.1 - 728.1) + (571.4 + 566.4) * (728.1 - 719.4) + (566.4 + 561.3) * (719.4 - 707.9) + (561.3 + 560.9) * (707.9 - 698) + (560.9 + 560.7) * (698 - 688.9) + (560.7 + 561.9) * (688.9 - 679.2) + (561.9 + 564.5) * (679.2 - 669.4) + (564.5 + 568.5) * (669.4 - 660.7) + (568.5 + 574.1) * (660.7 - 651.7) + (574.1 + 582.3) * (651.7 - 642.6) + (582.3 + 754.4) * (642.6 - 642.6) + (754.4 + 754.4) * (642.6 - 576.8) + (754.4 + 1081.1) * (576.8 - 576.8) + (1081.1 + 1081.1) * (576.8 - 538.9) + (1081.1 + 1169.4) * (538.9 - 538.9)) * 0.5 * 0.00694$