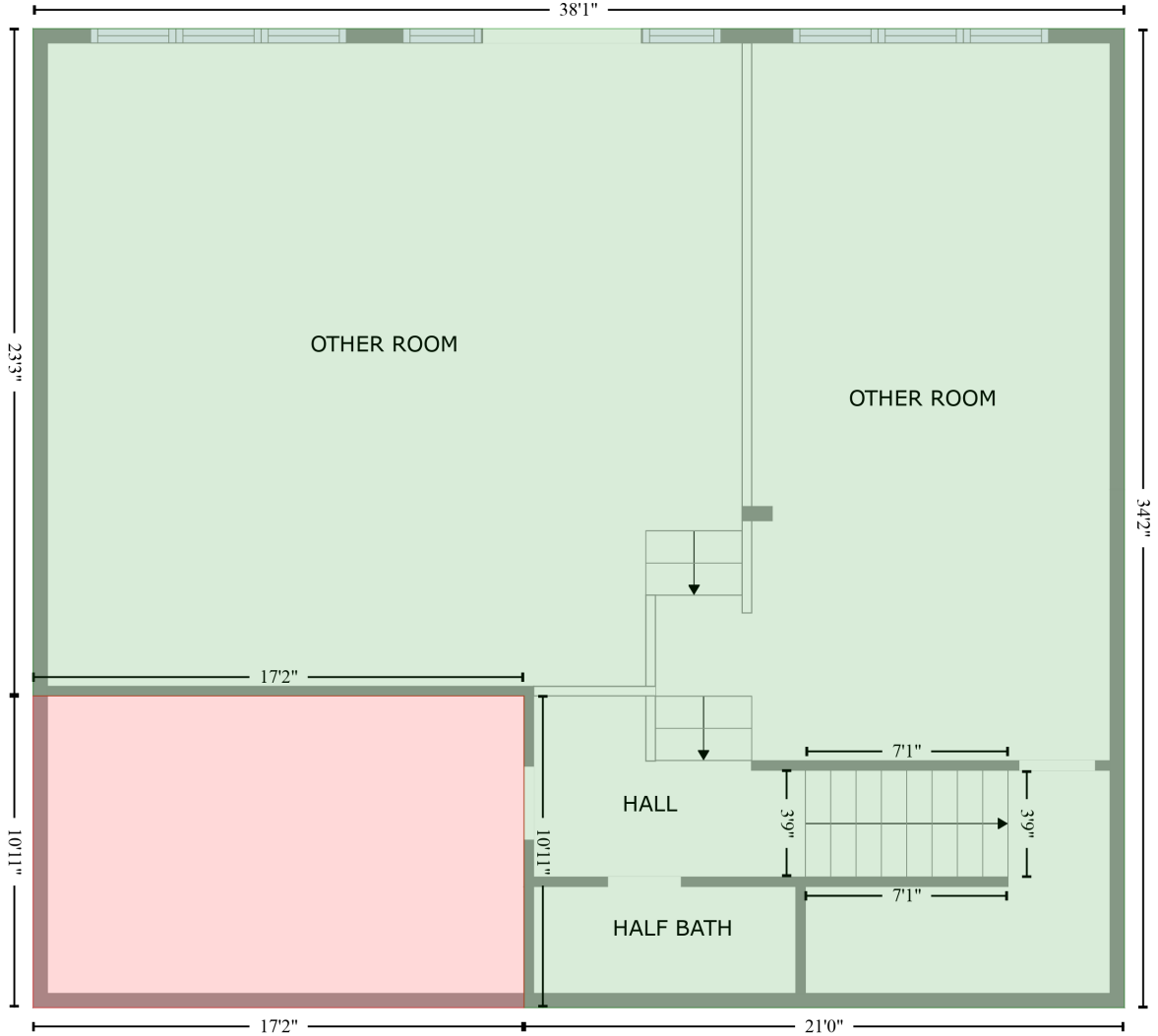


110 West Kings Ridge, Gaffney, South Carolina 29341, United States

Gross Living Area: 2458 sq. ft

FLOOR 1
[AREA: 1115]

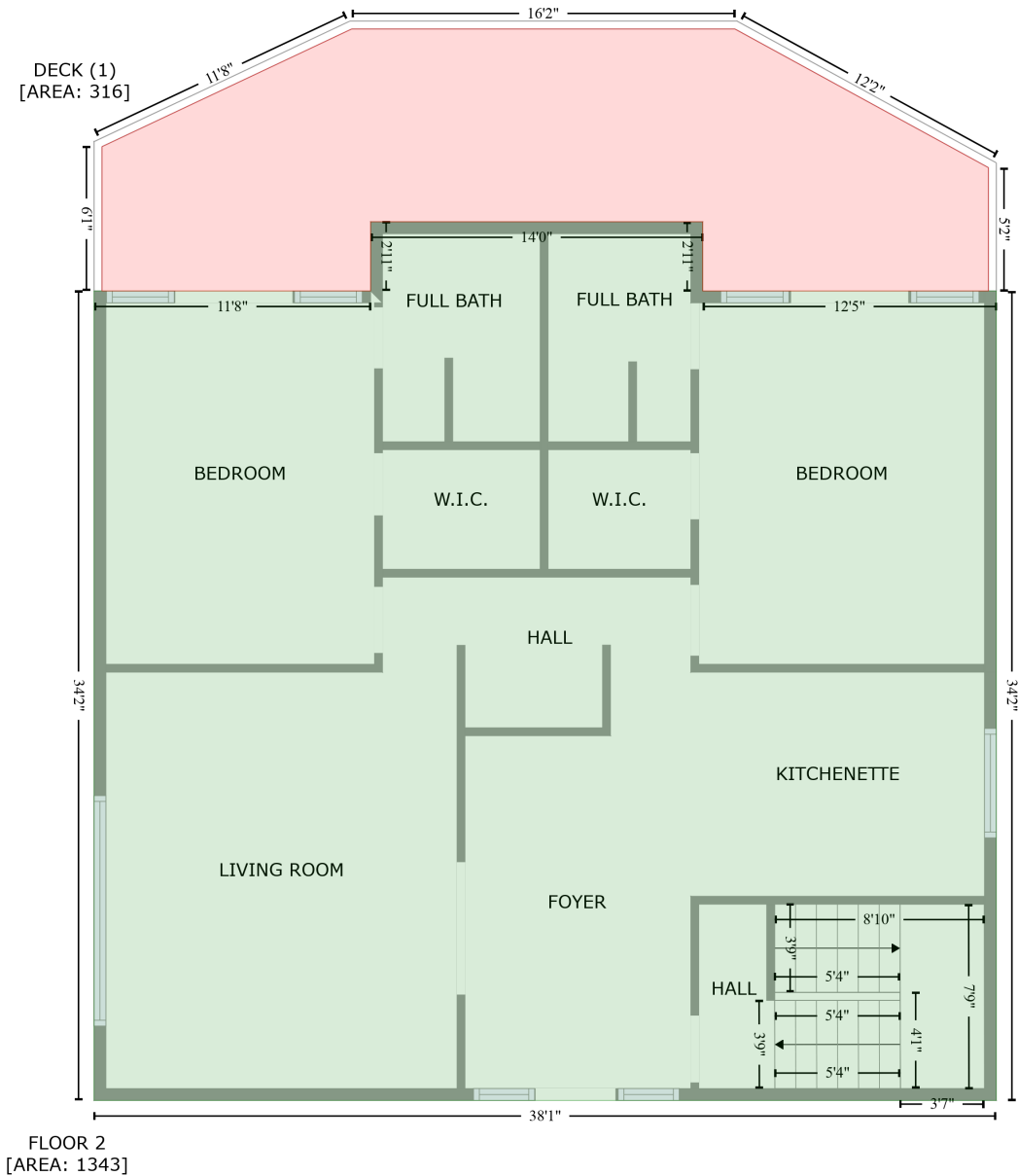


UTILITY ROOM (1)
[AREA: 187]

Space	Area (sq. ft)	Calculation <small>Coordinate Polygon Area Algorithm using inches</small>
FLOOR 1 (Living area)	1115	$-((545.9 + 545.9) * (181.8 - 591.9) + (545.9 + 294.4) * (591.9 - 591.9) + (294.4 + 294.4) * (591.9 - 461.3) + (294.4 + 88.7) * (461.3 - 461.3) + (88.7 + 88.7) * (461.3 - 181.8) + (88.7 + 545.9) * (181.8 - 181.8)) * 0.5 * 0.00694$
UTILITY ROOM (Non-living area)	187	$-((294.4 + 294.4) * (461.3 - 591.9) + (294.4 + 88.7) * (591.9 - 591.9) + (88.7 + 88.7) * (591.9 - 461.3) + (88.7 + 294.4) * (461.3 - 461.3)) * 0.5 * 0.00694$

110 West Kings Ridge, Gaffney, South Carolina 29341, United States

Gross Living Area: 2458 sq. ft



Space	Area (sq. ft)	Calculation <small>Coordinate Polygon Area Algorithm using inches</small>
FLOOR 2 (Living area)	1343	$-((392.2 + 392.2) * (126.3 - 161.3) + (392.2 + 541) * (161.3 - 161.3) + (541 + 541) * (161.3 - 571.4) + (541 + 83.8) * (571.4 - 571.4) + (83.8 + 83.8) * (571.4 - 161.3) + (83.8 + 223.9) * (161.3 - 161.3) + (223.9 + 223.9) * (161.3 - 126.3) + (223.9 + 392.2) * (126.3 - 126.3)) * 0.5 + 0.00694$
DECK (Non-living area)	316	$-((408.6 + 537) * (28.6 - 98.8) + (537 + 537) * (98.8 - 161.3) + (537 + 392.2) * (161.3 - 161.3) + (392.2 + 392.2) * (161.3 - 126.3) + (392.2 + 223.9) * (126.3 - 126.3) + (223.9 + 223.9) * (126.3 - 161.3) + (223.9 + 87.8) * (161.3 - 161.3) + (87.8 + 87.8) * (161.3 - 88.2) + (87.8 + 214.3) * (88.2 -$

110 West Kings Ridge, Gaffney, South Carolina 29341, United States

Gross Living Area: 2458 sq. ft

Space	Area (sq. ft)	Calculation <small>Coordinate Polygon Area Algorithm using inches</small>
		$28.6 + (214.3 + 408.6) * (28.6 - 28.6) * 0.5 * 0.00694$