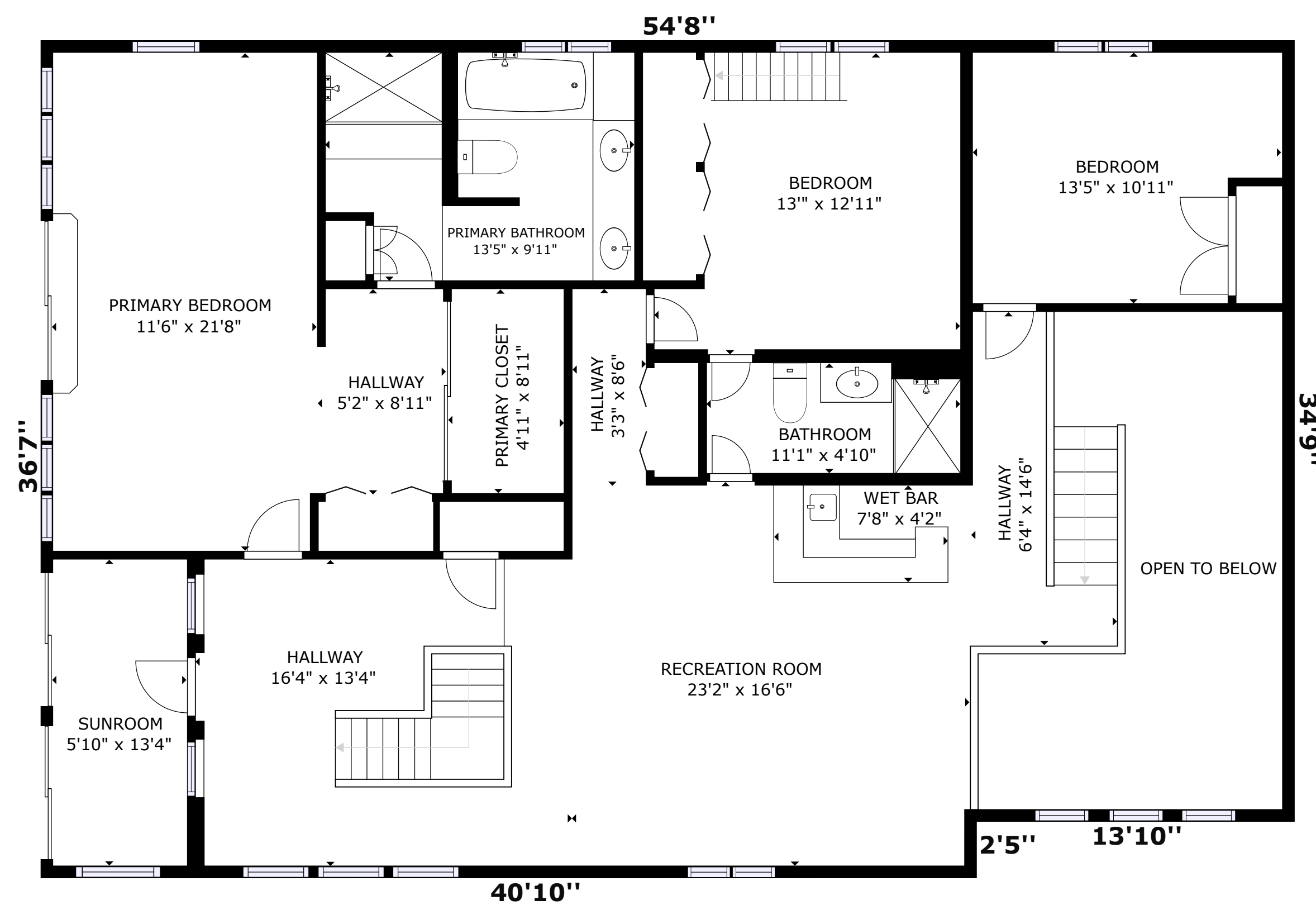
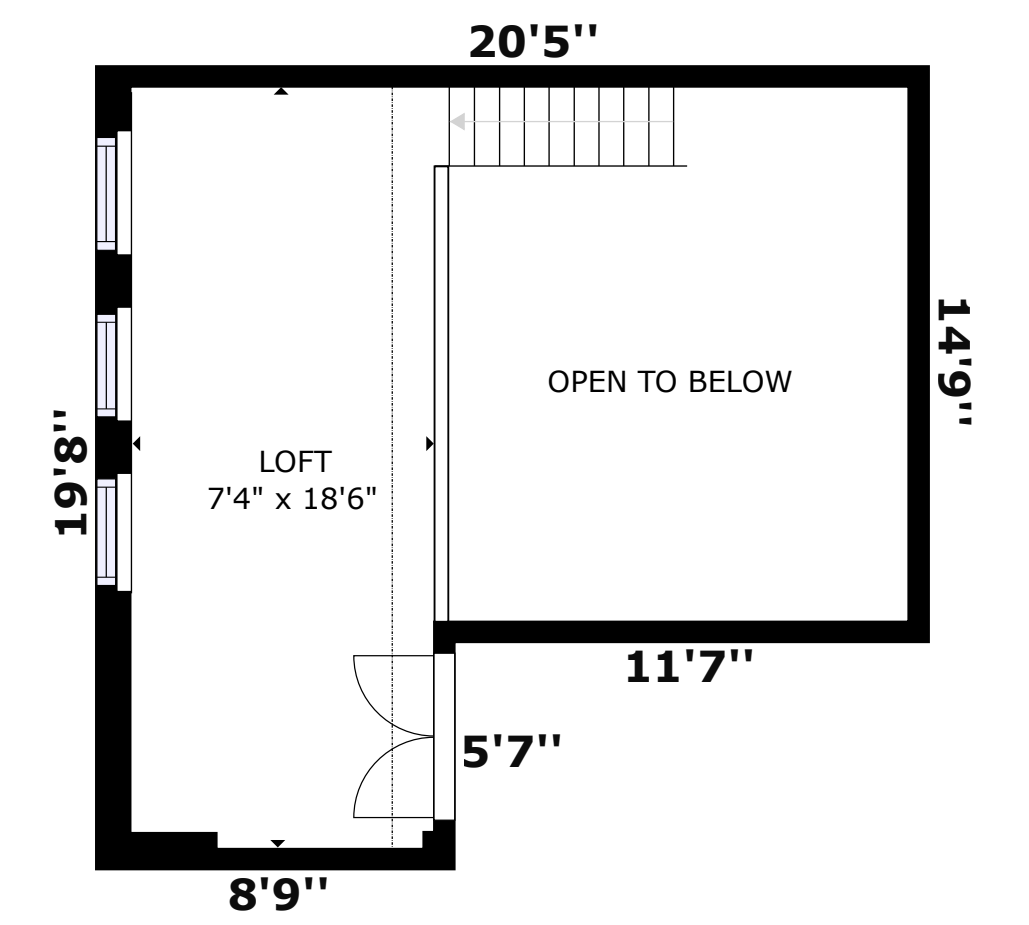


FLOOR 1



FLOOR 2



FLOOR 3



32 Bobolink Ln, Tijeras, NM, 87059

FLOOR 1: 2233 sq ft, FLOOR 2: 1597 sq ft, FLOOR 3: 166 sq ft

EXCLUDED AREA: GARAGE: 656 sq ft, WORKSHOP: 2851 sq ft, SUNROOM: 76 sq ft

TOTAL LIVEABLE AREA (BASED ON EXTERIOR DIMENSIONS): 3996 sq. ft

ALL MEASUREMENTS ARE APPROXIMATE. THIS DOCUMENT MAY NOT BE USED TO DETERMINE THE VALUATION OF THE PROPERTY OR ESTIMATE REPAIRS OR IMPROVEMENTS. ALL PARTIES USING THIS DOCUMENT AGREE TO TAKE THEIR OWN MEASUREMENTS IN ORDER TO DETERMINE THE LAYOUT AND SIZE OF THE PROPERTY.