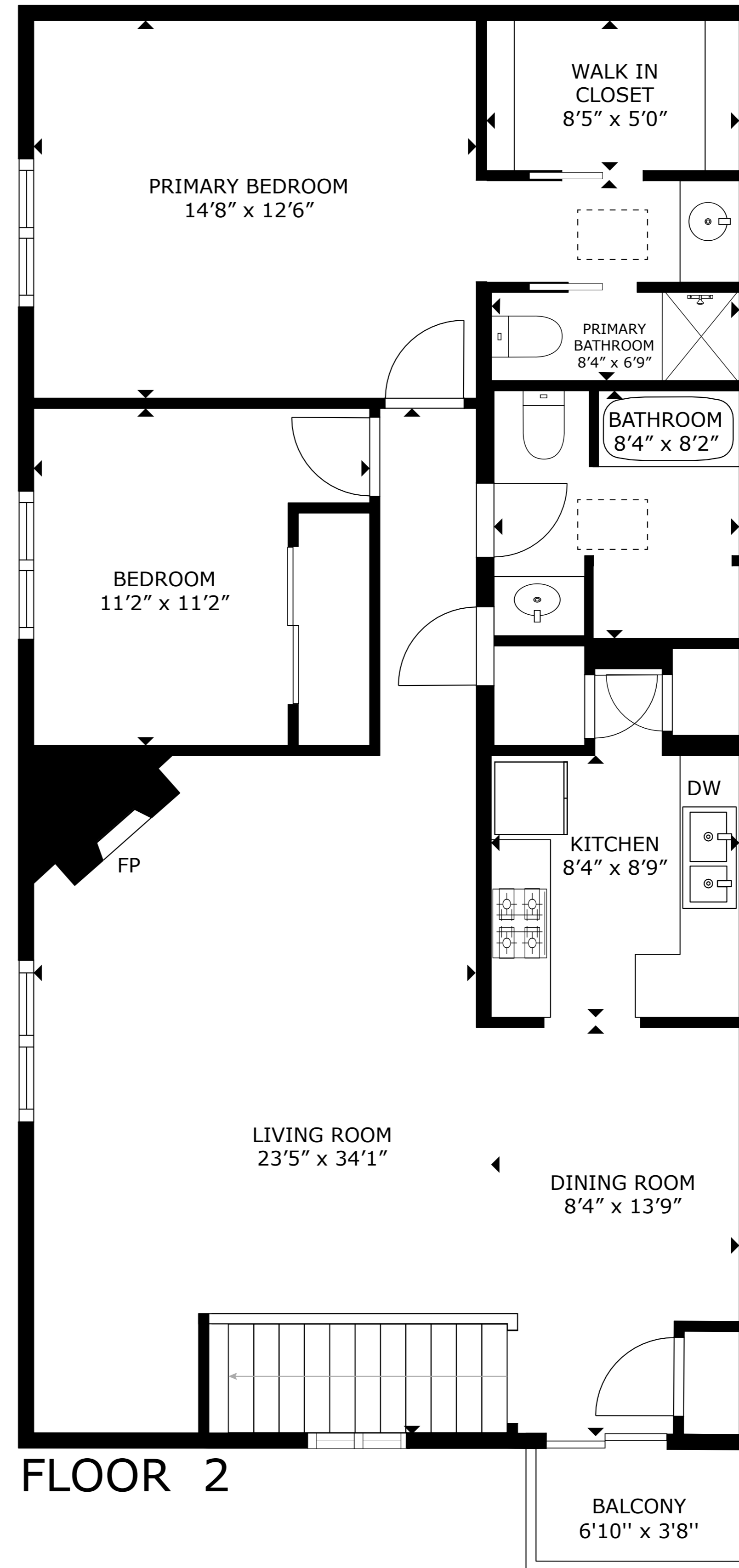


FLOOR 1



FLOOR 2

5801 Lowell St NE 30D, Albuquerque, NM, 87111

FLOOR 1: 59 sq. ft, FLOOR 2: 1060 sq. ft

EXCLUDED AREA: GARAGE: 264 sq. ft, BALCONY: 26 sq. ft

TOTAL LIVEABLE AREA (BASED ON INTERIOR DIMENSIONS): 1119 sq. ft

ALL MEASUREMENTS ARE APPROXIMATE. THIS DOCUMENT MAY NOT BE USED TO DETERMINE THE VALUATION OF THE PROPERTY OR ESTIMATE REPAIRS OR IMPROVEMENTS. ALL PARTIES USING THIS DOCUMENT AGREE TO TAKE THEIR OWN MEASUREMENTS IN ORDER TO DETERMINE THE LAYOUT AND SIZE OF THE PROPERTY.



3D CASAS