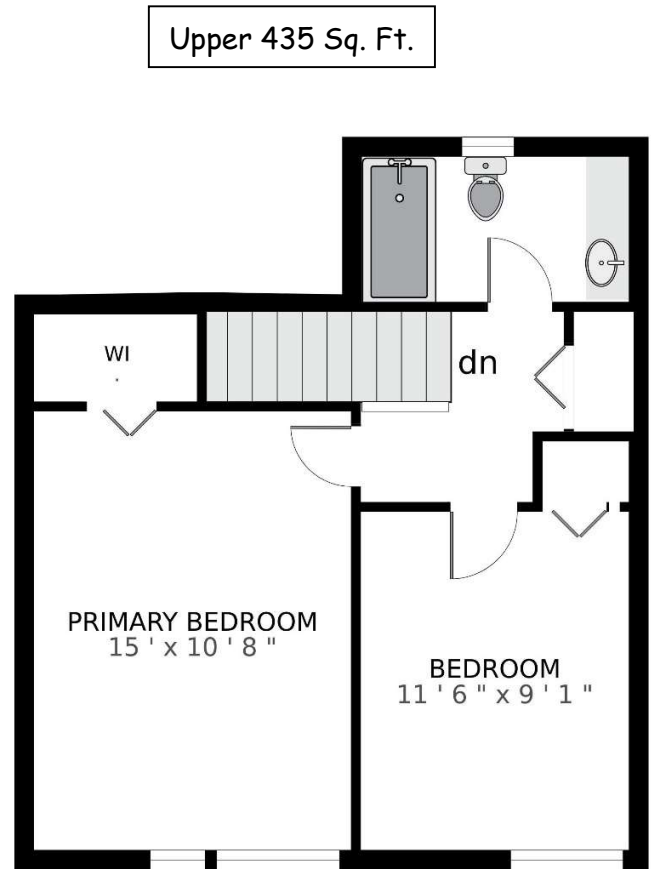
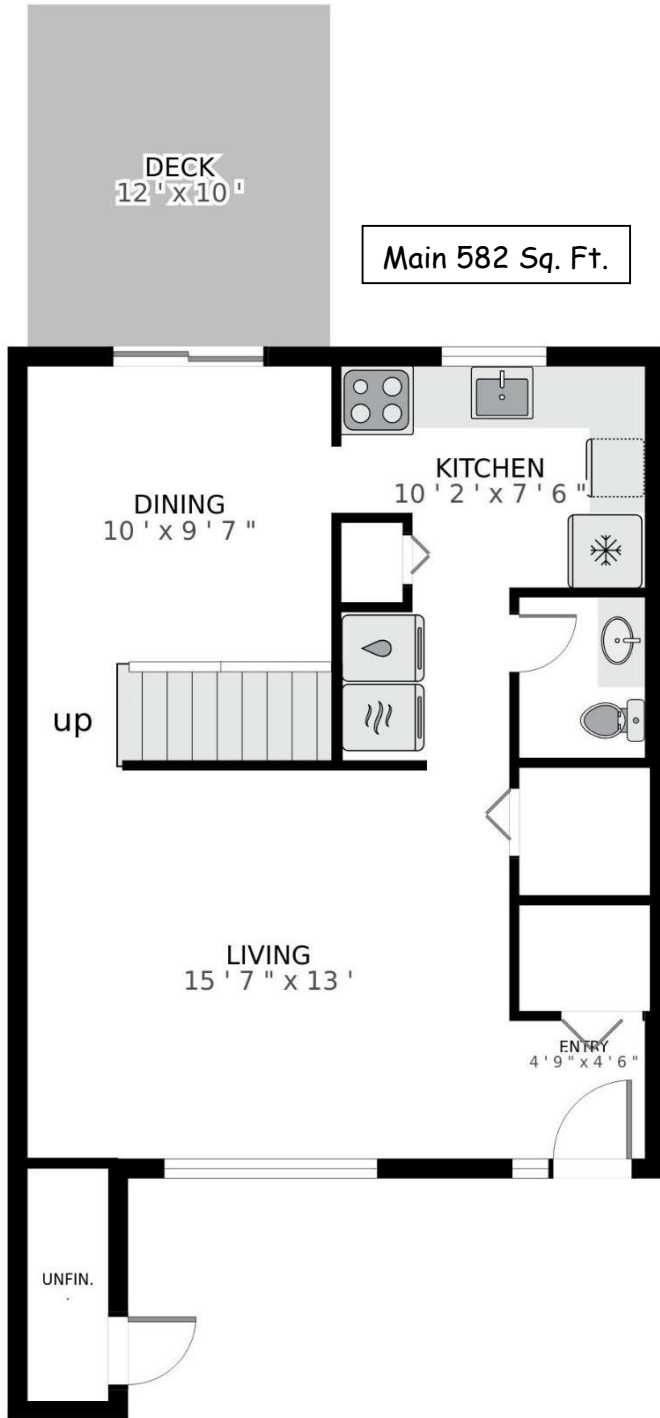


14 - 3981 Nelthorpe Street
 Victoria, BC
 V8X 3Z2



	Finished Sq. Ft.	Unfinished Sq. Ft.	Total Sq. Ft.
Main	555	27	582
Upper	435	0	435
Total	990	27	1017
Deck	0	120	120

Square Footage supplied by Strata Plan

Prepared for the exclusive use of
 Jot Home of Century 21 Queenswood Real Estate Ltd.
 jothome.ca
 File # 3893 Measured June 03, 2024
 by True Measurement 250-744-0911
 Victoria, BC