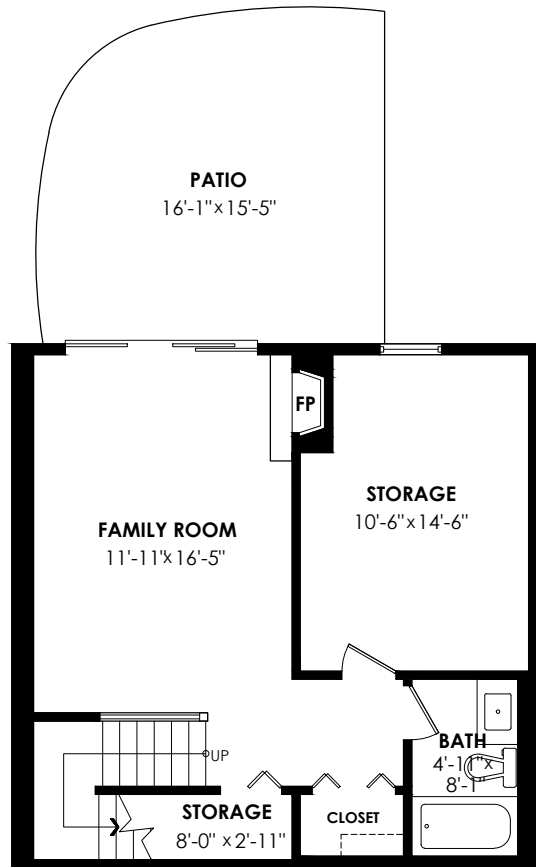


47-323 Governors Court, New Westminster

Lower Floor: 553 sq. ft. Patio: 230 sq. ft.
 Main Floor: 855 sq. ft. Balcony: 141 sq. ft.
 Upper Floor: 990 sq. ft. Storage: 22 sq. ft.
Total Livable: 2,398 sq. ft. Deck: 169 sq. ft.
 Garage: 367 sq. ft.
Total Extras: 929 sq. ft.

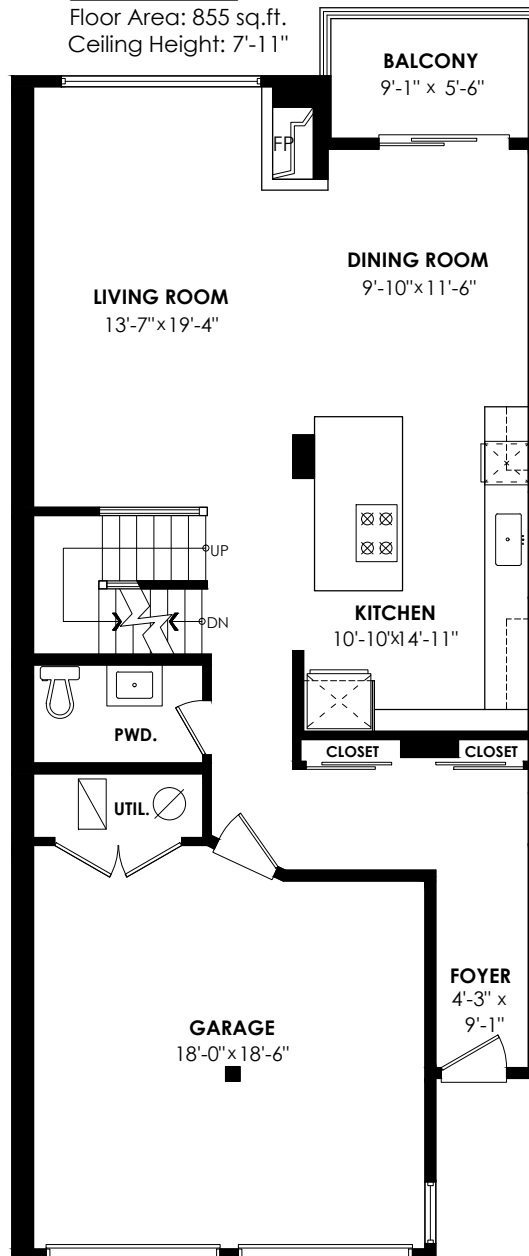
Lower Floor Plan

Floor Area: 553 sq.ft.
 Ceiling Height: 8'



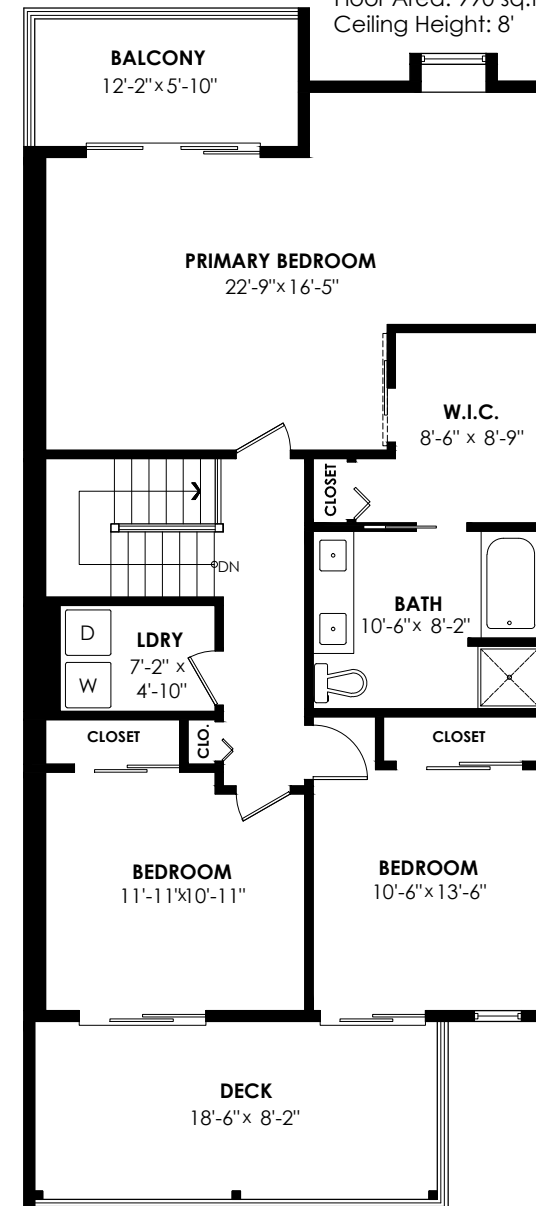
Main Floor Plan

Floor Area: 855 sq.ft.
 Ceiling Height: 7'-11"



Upper Floor Plan

Floor Area: 990 sq.ft.
 Ceiling Height: 8'



Floor plan is for marketing purposes only. Not intended for architectural or construction use.
 Sizes and dimensions are approximate, actual may vary. All information provided within +/- 2% tolerance.