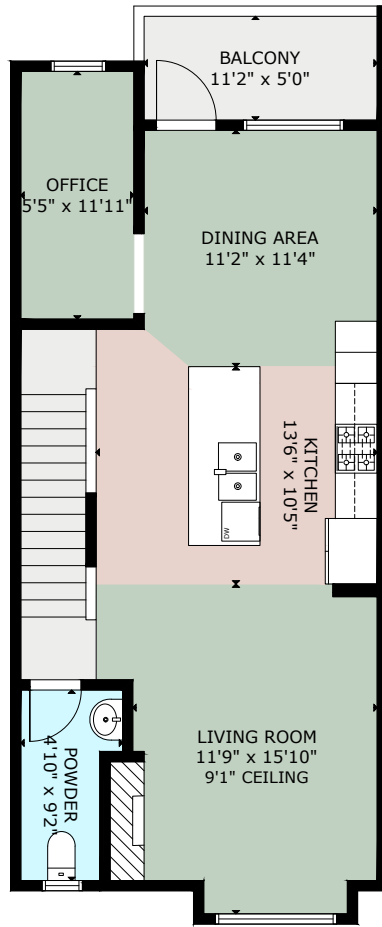
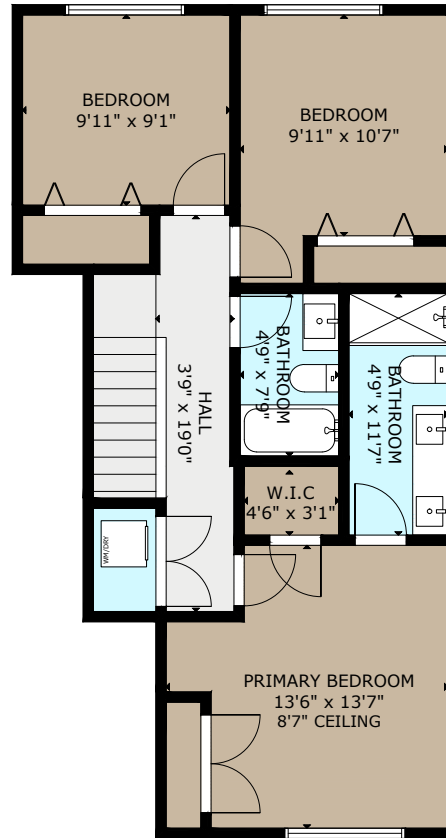


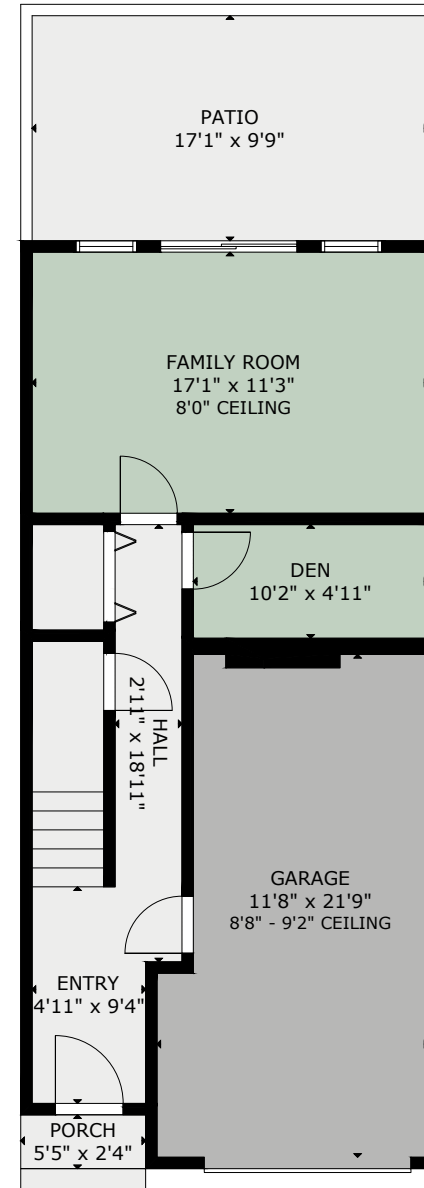
MAIN FLOOR
698 SQ. FT.



UPPER FLOOR
726 SQ. FT.



LOWER FLOOR
459 SQ. FT.



14 - 1810 KINGS ROAD

	FINISHED	GARAGE	DECK / PATIO	BALCONY	PORCH
MAIN	698	-	-	56	13
UPPER	726	-	-	-	-
LOWER	459	232	166	-	-
TOTAL	1883	232	166	56	13

SIZE AND DIMENSIONS ARE APPROXIMATE, ACTUAL MAY VARY
PREPARED FOR THE EXCLUSIVE USE OF

MUNRO | KING

MEASURED ON 19/12/24, BY STELLAR REAL ESTATE MARKETING
www.stellarca.ca | +1 (250) 929 1888 | info@stellarca.ca

